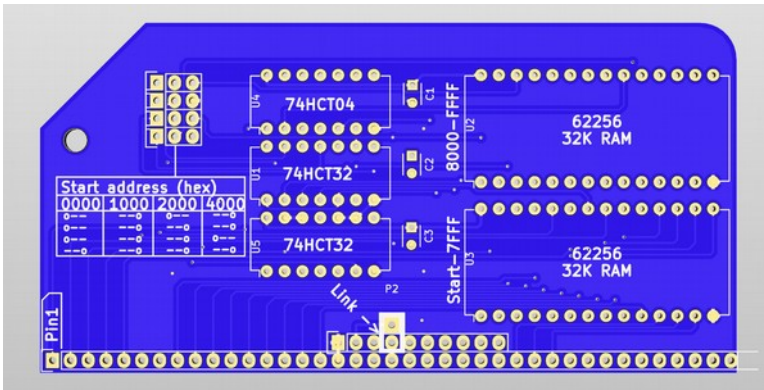


RC2014

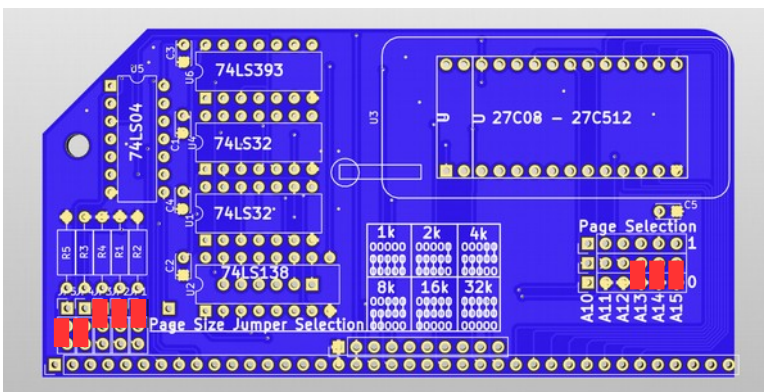
RC2014 Plus Jumper Settings – 32k BASIC



64k RAM Module

No jumpers required on this module

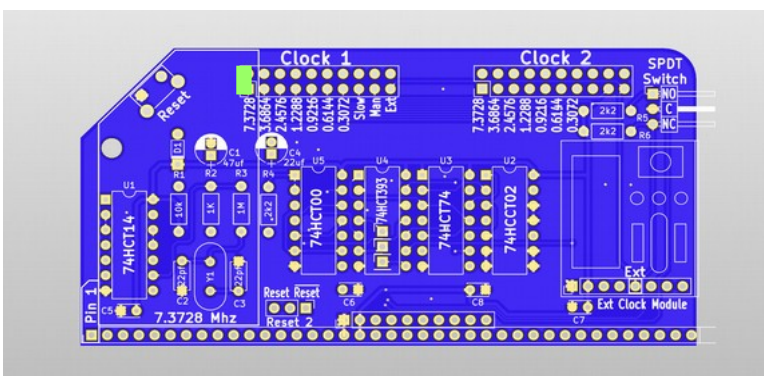
Do not solder a link where it says Link-->



Pageable ROM Module

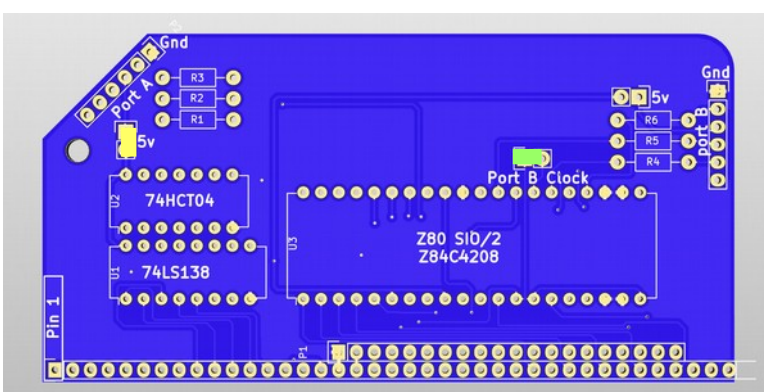
Page Size (Lower, Lower, High, High, High) sets page size to 8k

Page Selection (None, None, None, Lower, Lower, Lower) sets the 8k page to start at 0x0000 on the 64k ROM



Dual Clock Module

Solder link on Clock 1 – 7.3278 Mhz. This sets the CPU frequency to 7.3278Mhz and Serial Port A to 115,200bps



Dual Serial SIO/2 Module

5v jumper optional if using FTDI cable to power RC2014. If RC2014 is powered from backplane, do not connect jumper.

Solder link on Port B Clock. Although Port B is not active in 32k BASIC, it still needs a clock signal for the SIO/2