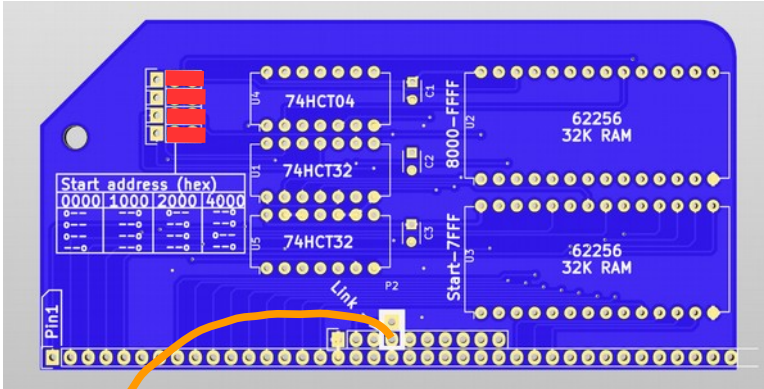


# RC2014

## RC2014 Classic With CP/M Upgrade Kit Jumper Settings

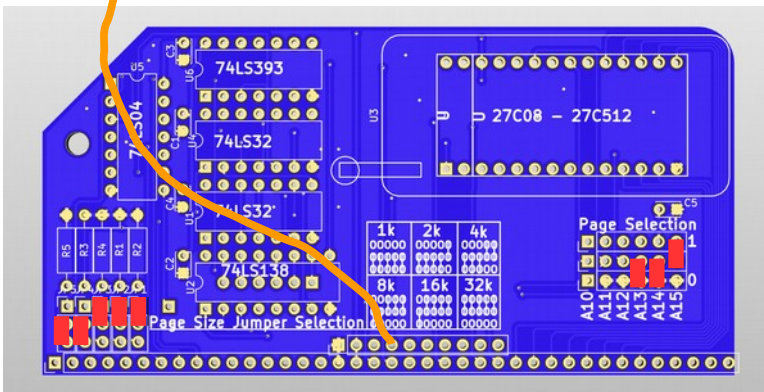


### 64k RAM Module

Use 39 pin right angle headers and 10 pin straight headers on this module

All four jumpers to right hand setting. Top 3 jumpers set start address to 0x0000. Bottom jumper sets lower 32k to be paged in or out from Pageable ROM board.

Do not solder a link where it says Link-->



### Pageable ROM Module

Use 39 pin right angle headers and 10 pin straight headers on this module

Page Size (Lower, Lower, High, High, High) sets page size to 8k

Page Selection (None, None, None, Lower, Lower, High) sets the 8k page to start at 0x8000 on the 64k ROM

### Jumper Cable

Connect jumper cable between 4<sup>th</sup> pin on RAM Extended Header and 4<sup>th</sup> pin on ROM Extended Header